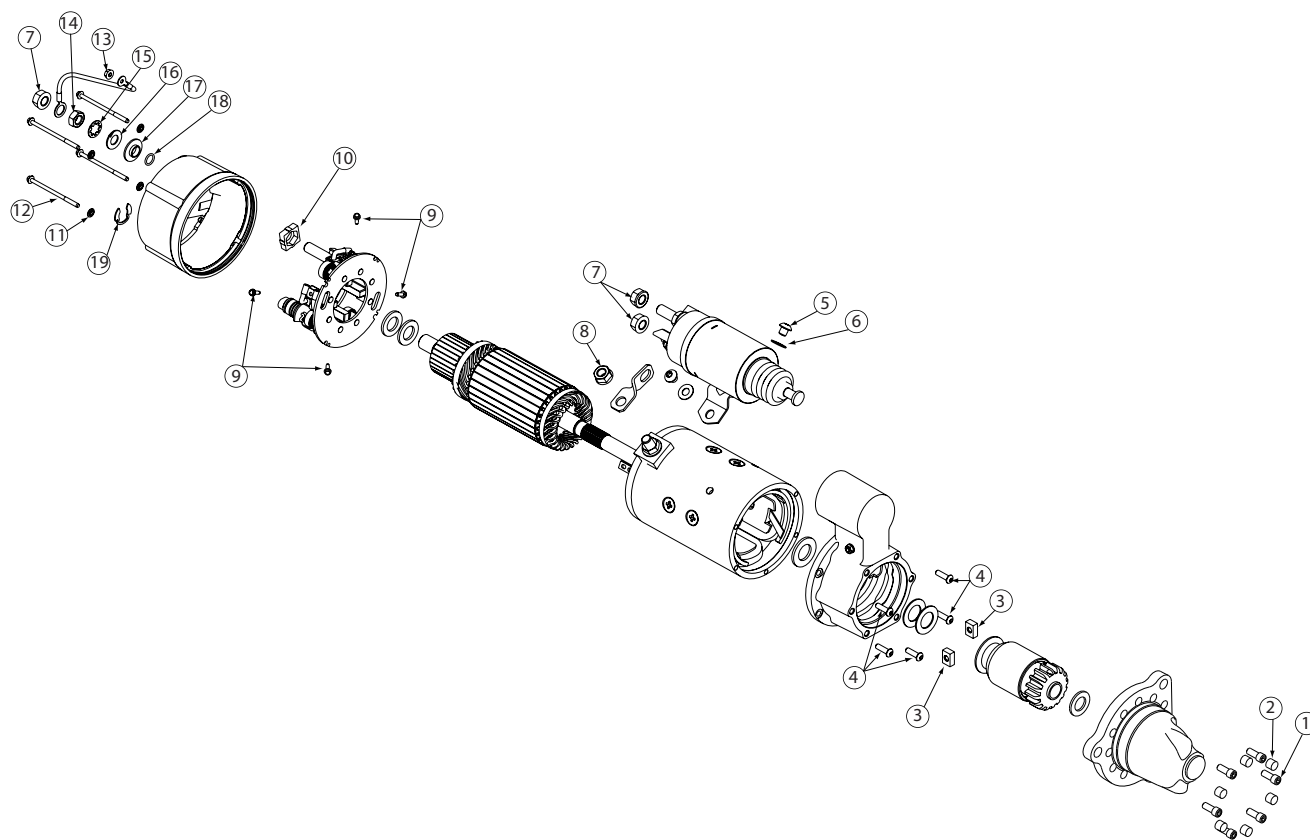


Source: Leece-Neville Heavy Duty Systems Division - Arcade, NY USA  
Date: JULY 7, 2017  
Bulletin No: TSB-3004  
Models: MS2 series starter motors  
Subject: Hardware service kits

**NOTE:** All of these components are part of the hardware kit and not available for individual purchase.



**Important:** The information contained in this bulletin is intended for use by trained, professional technicians who have the proper tools, equipment, and training to perform the required maintenance described above. This information is NOT intended for 'do-it-yourselfers'; and you should not assume that this information applies to your equipment. If you have any questions regarding this information please visit our website at [www.prestolite.com](http://www.prestolite.com), or contact our technical service department at:

Date: JULY 7, 2017

Bulletin No: TSB-3004

**Note:** All of thses components are part of the hardware kit and not available for individual purchase.

Description	Key	Qty	Where Used
Soc HD Bolts	1	6	Hold nose housing to shift lever hsg
Rubber Plugs	2	6	Nose housing plugs
Cam, Lever Arm	3	2	Moves drive on shaft
Screw, Button HD	4	5	Attach shift lever Hsg to motor
Screw, Button HD	5	2	Attaches solenoid to motor
Washer, Flat	6	2	Flat washers for Key item 5
Nut, Hex Flange	7	3	Attaches cable to starter
Nut, Hex Flange, Metric	8	1	Attaches jumper strap to motor
Screw, Tap	9	4	Attaches brushes to brush plate
Insulator	10	1	Negative stud insulator
Washer, Sealing	11	4	Seals CE bolts to CE Hsg
Bolt, Hex, Wash	12	4	Attaches CE Hsg to motor
Nut, Hex Flange	13	1	Attaches ground wire to solenoid
Nut, Hex	14	1	Negative stud hardware
Lockwasher	15	1	Negative stud hardware
Washer, Flat	16	1	Negative stud hardware
Insulator	17	1	Insulates negative stud from CE Hsg
O-Ring	18	1	Seals negative stud in CE Hsg
Ring, Retainer	19	1	Holds OCP into CE Hsg

Important: The information contained in this bulletin is intended for use by trained, professional technicians who have the proper tools, equipment, and training to perform the required maintenance described above. This information is NOT intended for 'do-it-yourselfers'; and you should not assume that this information applies to your equipment. If you have any questions regarding this information please visit our website at [www.prestolite.com](http://www.prestolite.com), or contact our technical service department at: